

- ii. Plant disease free whole tubers
- iii. Prepare high ridges to avoid exposure of seed tubers
- iv. Collect and destroy larvae, pupae and adults of white grubs.

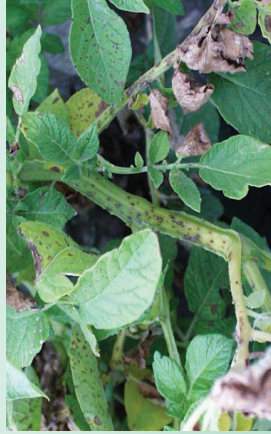
Diseases

Early/Late blight

Symptoms: Decaying leaves often emit an offensive odour. Under ground tubers decay before harvesting.

Management:

- i. Plant disease free whole tubers
- ii. Follow crop rotation with non solanaceous crop like Mustard, cabbage, cauliflower etc.
- iii. Seed treatment with Mancozeb for 20 minutes before storages for soil and tuber borne diseases.
- iv. Grow resistant varieties For late blight: Kufri Jyoti, Kufri Megha, Kufri Giriraj, Kufri Kanchan
- v. Sort out late blight infected tubers damage tubers to avoid secondary infection in the store



Authored by:

**Madhumita Sonowal Bora, Subject Matter Specialist (Plant protection)
Dr. Debasish Borah, Subject Matter Specialist (Agronomy)**

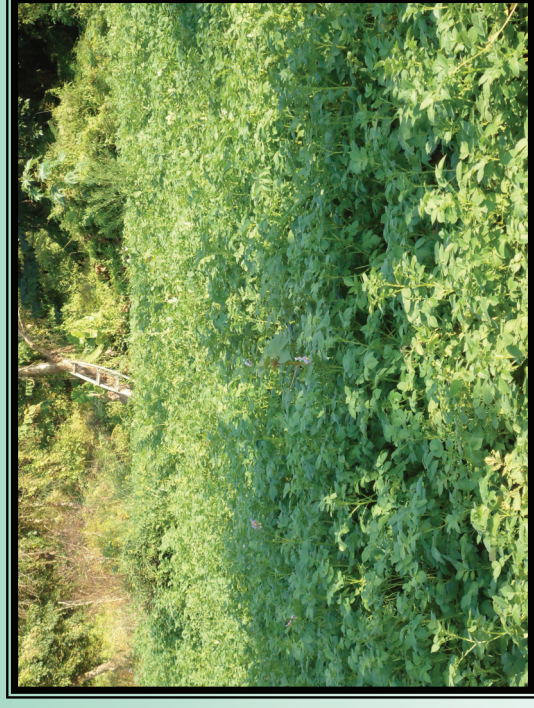
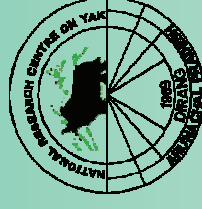
**Published by: Dr. Debasis Sasmal
Programme Co-ordinator I/C, KVK,Lohit
under
Director, ICAR-NRC on Yak, Dirang**

**Typed and Designed by: Md. Ziaur Rahman,
Programme Assistant (Computer)**

For further details contact

**E.mail :pckvklohit@gmail.com, Ph.No. 03806200100 &222381
www.KVKlohit.org**

Package and Practices of Potato



**Krishi Vigyan Kendra,
Lohit, Namsai Dist., Momong
Arunachal Pradesh
Pin-792102**

Potato is the most important tuber crop grown in Arunachal Pradesh

Varieties:

Name	Duration (days)	Yield (q/ha) Rainfed	Plant characters	Tuber Character	Tolerance to disease
Kufri Chandra Mukhi	80-100	85 - 100	Medium tall erect	Oval shaped slightly curved, skin colour white, eyes flat	Leaf roll and virus
Kufri Jyoti	110-120	85-100	Tall erect	Oval shaped, Flat skin white, eyes flat, flesh dull white	Late blight tolerant
Kufri Sindhuri	110-120	120-150		Round shaped, skin light, red eyes, flesh pale yellow and sticky.	Moderately tolerant to Late blight
Kufri Megha	100-120	175 - 200		White round oval tubers of medium size, good keeping quality	Late blight resistant

Soil Type:

Well drained sandy loam and loam soils, rich in organic matters are suitable.

Field Preparation:

Field should be thoroughly ploughed to obtain a good tilth. The furrows should be prepared at 50 cm apart.

Time of planting:

The optimum time for planting is mid October to Mid November. In case of Kufri Sindhuri planting may be extended upto middle of December.

Method of planting:

The sprouted tubers should be planted in furrows with sprouts facing upward. In handling the tubers, care should be taken to avoid sprout damage.

Seed Selection:

Virus free, healthy, medium sized sprouted tubers are to be selected for planting. Ideal size is about 2.5 cm in diameter (25-40 g).

Seed Treatment:

In case of cut seeds, the pieces are to be dipped in Mancozeb (Dithane M 45) @ 5 g in 1 Litre of water for about 10 minutes. After treatment seeds are to be spread thinly and dried under shade for 48 hours.

Seed Rate:

The seed requirement is 22.5-25 q/ha. Tubers are to be placed at 15 cm apart.

Fertility Management:

The tones or 5 truck loads or 20 cart loads of well decomposed FYM/ha should be applied in the furrows before planting.

	Nutrient requirement (kg/ha)	From	Fertilizer (kg/ha)	Requirement (kg/bigha)
N	60	Urea	133	19
P ₂ O ₅	50	SSP	312	45
K ₂ O	50	MOP	83	12

Entire quantity of mixed fertilizers should be applied in furrows as basal application and be covered with a thin layer of soils so that tubers do not come into direct contact with the fertilizers.

Insect Pests

Aphid

Symptoms: Yellowish and black mould appear in leaves.

Management: Apply phorate @ 1 kg/hac as application/earthing up followed by one spray of Rogor 750ml/hac/750lit. of water.

Cut worm

Symptoms: Cutting young plants, holes in tubers

Management:

- Sort out cut worm damage tubers to avoid secondary infection in the stores.
- Use Chlorpyrifos 20 EC @ 500g/ha against cut worms.

White grubs

Symptoms: Feeding on roots, stems and tubers of potato, resulting drying and death of plant

Management:

- Summer deep ploughing

